

**MEETING AGENDA**  
**CITY OF LOS ANGELES**  
**DEPARTMENT OF RECREATION AND PARKS**  
**FACILITY REPAIR AND MAINTENANCE COMMISSION TASK FORCE**

**Thursday, September 15, 2022 at 8:30 a.m.**

**Use this link: <https://us02web.zoom.us/j/81732169111>  
or dial (669) 900-6833 to join the meeting  
then enter this webinar ID: 817 3216 9111 and press #**

---

LYNN ALVAREZ, CHAIR  
JOSEPH HALPER, COMMISSIONER

Staff:  
Jimmy Kim, General Manager  
Cathie Santo Domingo, Assistant General Manager  
Darryl Ford, Superintendent  
City Attorney Representative

---

IN CONFORMITY WITH CALIFORNIA GOVERNMENT CODE SECTION 54953 AND DUE TO CONCERNS OVER COVID-19, THIS TASK FORCE MEETING WILL BE CONDUCTED ENTIRELY TELEPHONICALLY.

EVERY PERSON WISHING TO ADDRESS THE COMMISSION MUST USE THIS LINK: <https://us02web.zoom.us/j/81732169111> OR DIAL (669) 900-6833, AND ENTER 817 3216 9111 AND THEN PRESS #. INSTRUCTIONS ON HOW TO SIGN UP FOR PUBLIC COMMENT WILL BE GIVEN TO LISTENERS AT THE START OF THE MEETING. EACH SPEAKER WILL BE GRANTED A MAXIMUM OF TWO MINUTES.

NOTICE TO PAID REPRESENTATIVES - IF YOU ARE COMPENSATED TO MONITOR, ATTEND, OR SPEAK AT THIS MEETING, CITY LAW MAY REQUIRE YOU TO REGISTER AS A LOBBYIST AND REPORT YOUR ACTIVITY. SEE LOS ANGELES MUNICIPAL CODE 48.01 ET SEQ. MORE INFORMATION IS AVAILABLE AT [ethics.lacity.org/lobbying](https://ethics.lacity.org/lobbying). FOR ASSISTANCE, PLEASE CONTACT THE ETHICS COMMISSION AT (213) 978-1960 OR [ethics.commission@lacity.org](mailto:ethics.commission@lacity.org).

1. CALL TO ORDER
2. CURRENT BUSINESS
  - A. Ernest E. Debs Regional Park – Anahuacalmecac Native Tree Restoration Project Plant Palette and Plan  
Discussion of Conceptual Approval
  - B. Griffith Park Pollywog Area - LA River Ecosystem Restoration Project Phase 1 Reach A  
Discussion of Conceptual Approval
3. PUBLIC COMMENT

Comments by the Public on Matters within Task Force Jurisdiction.
4. NEXT MEETING

September 15, 2022

The next Facility Repair and Maintenance Commission Task Force Meeting is tentatively scheduled telephonically through Zoom for October 6, 2022 at 8:30 a.m..

5. ADJOURNMENT

Additional Information

Under the California State Ralph M. Brown Act, those wishing to make audio recordings of the Commission Task Force Meetings are allowed to bring tape recorders or camcorders in the Meeting.

Sign language interpreters, assistive listening devices, or any auxiliary aides and/or services may be provided upon request. To ensure availability, you are advised to make your request at least 72 hours prior to the meeting you wish to attend. For additional information, please contact the Commission Office at (213) 202-2640.

Information on Agenda items may be obtained by calling the Commission Office at (213) 202-2640. Copies of the Commission Task Force Agenda may be downloaded from the Department's website at [www.laparks.org](http://www.laparks.org).

CITY OF LOS ANGELES  
DEPARTMENT OF RECREATION AND PARKS  
FACILITY REPAIR AND MAINTENANCE COMMISSION TASK FORCE BRIEFING  
SEPTEMBER 15, 2022

Anahuacalmecac International University Preparatory of North America (School) is an educational institution with a globally inclusive curriculum with a focus on the cultural and intellectual heritage of Indigenous peoples. The Anahuacalmecac Native Tree Restoration Project (Project) requests approval of a Right of Entry and CEQA exemption for the planting, maintenance and educational activities to take place at Ernest E. Debs Regional Park in Council District 1 (Park). The Park is part of the historic indigenous village of Otsuunga, on unceded territories of the Gabrieleño Shoshone/Kizh/Tongva Nations of Southern California. See Exhibit A for the planting location map.

The Project goals are to improve urban forest health and connect students and communities to the cultural and spiritual meaning that the land has for Indigenous Peoples. The proposed project will plant native plants propagated in local nurseries to make lasting improvements to the urban forest at the Park, improving health and climate resiliency, connecting disenfranchised, historically excluded and underserved communities to forests, and removal of non-native species. Trees to be planted include the Southern California Black Walnut, Blue Elderberry, Coast Live Oak and Toyon.

Native Tree Restoration Project objectives are to: (1) Help restore, improve, and make more resilient a local urban forest in the northeast region of Los Angeles by planting 500 native trees and plants using traditional Indigenous environmental stewardship. (2) Connect 250+ urban Native youth to their cultural identities and heritage, heal the land through nature and land-based traditions, and expose youth to environmental careers. (3) Engage at-risk communities in the intergenerational transmission of Indigenous knowledge between elders and youth, through potential curriculum development, experiential learning, workforce development, two-generation activities around harvesting and traditional forms of cultural stewardship, etc.

This Project will be funded through a CalFire grant in the amount of \$99,110 awarded to the School on December 12, 2022. Additional funding will be provided by the School in the amount of \$120,000. The primary stakeholders involved in this project include local Indigenous youth, local residents in the Debs Park area, local educators, tribal leaders and cultural guides. Additional partners include the Gabrieleño Shoshone Nation of Southern California, Gabrieleño Band of Mission Indians - Kizh Nation, TreePeople, North East Trees, the Audubon Center at Debs Park, LA Compost, CalFire, and the Department of Recreation and Parks (RAP). Several stakeholder meetings between RAP, North East Trees, CalFire and the School have taken place from January to August 2022.

If approved, RAP would be required to provide a water source for the School to be able to water the plants and trees. RAP Forestry and Maintenance Divisions will coordinate the provision of hand tools such as shovels to support planting events. RAP staff may also be able to assist in site prep and removal of invasive species. The School has committed to performing tree maintenance for 5 years after the planting is completed.

This Project is adjacent to the North East Trees tree planting project in Debs Park, as shown on the map in Exhibit A. North East Trees was granted approval for their tree planting project in January 2022.

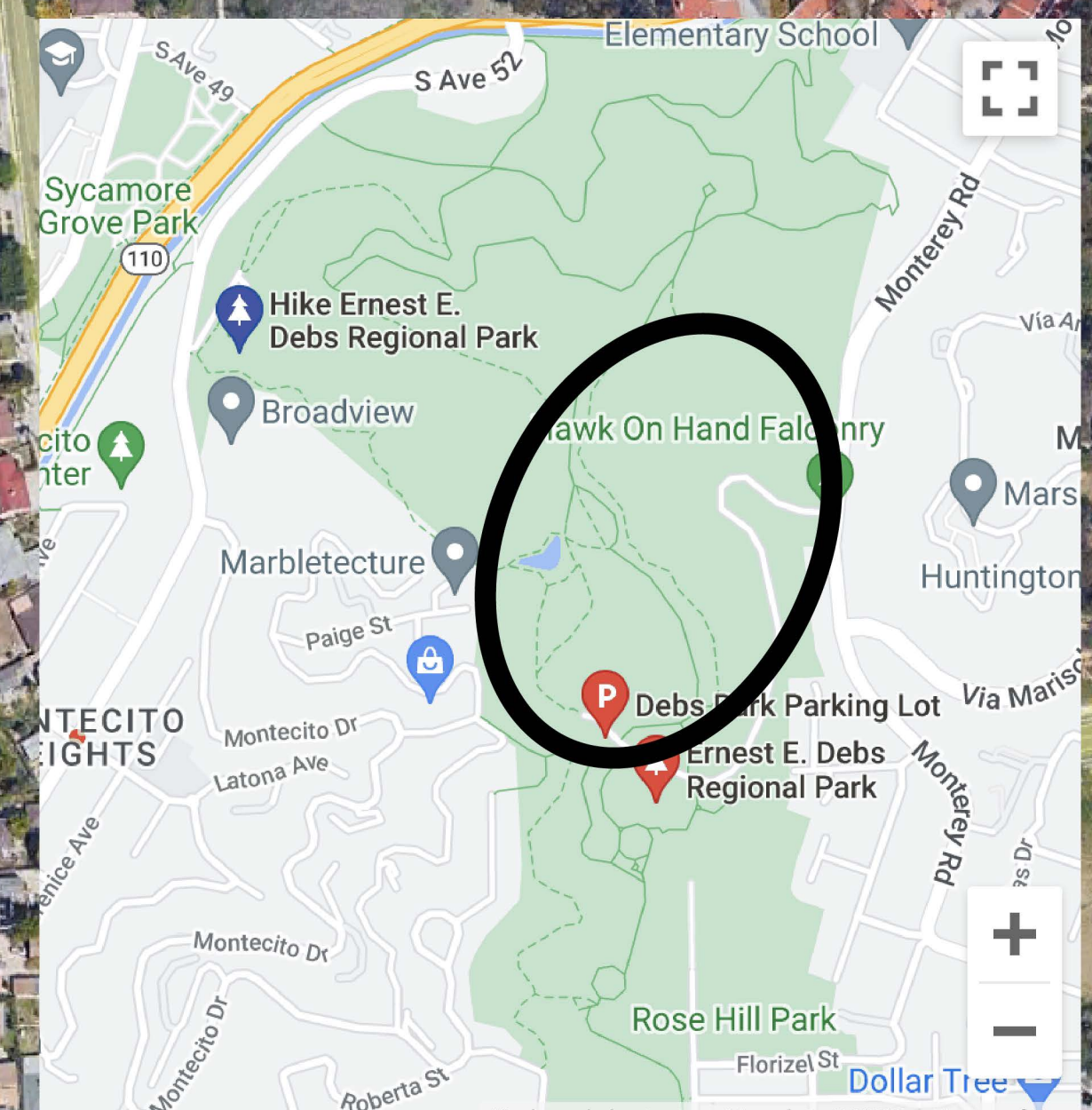


# CEQA Approved Urban Tree Reforestation Zone

North East Trees  
Restoration

Anahuacalmecac  
Native Tree Restoration Project

## ERNEST E. DEBS PARK



Google Earth

Imagery Date: 1/2/2020

34°05'48.80" N 118°11'30.80" W elev 0 ft

eye alt 3756 ft



CITY OF LOS ANGELES  
DEPARTMENT OF RECREATION AND PARKS  
FACILITY REPAIR AND MAINTENANCE COMMISSION TASK FORCE BRIEFING  
September 15, 2022

- Project Name: LARER Phase 1 Reach A Pollywog Park
- Requested Action: FYI on this future project that is starting conceptual design.
- Project Location: The project is located on undeveloped park land that is accessed from 1598 W. Valley Heart Dr, Burbank, 91506. This site contains two parcels: 2443022901 and 5581001906. The parcels are on the north side of the Los Angeles River and divided by the 134 Freeway approximately between Buena Vista St (western boundary) and S Beachwood Dr (eastern boundary) as shown in the attached materials. These parcels are located in CD 4, and a portion of Griffith Park that was granted to the City as Parkland from LADWP in the 1920's. Caltrans condemned portions of the site in the 1960's for the 134 Freeway.
- Scope of Work: This project will be one of the first elements of the 11-mile LA River Ecosystem Restoration Project documented in the Feasibility Report that was adopted by the LA City Council, the U.S. Army Corps of Engineers (USACE), and Congress in 2016. This is a joint project between the City and the USACE. The project will include: a) Habitat restoration through planting of riparian community, b) Irrigation for establishment of new plantings and a drought management plan, c) Fine-grading, swales, and other localized water harvesting/infiltrating features to support new riparian community, d) Habitat and wildlife connectivity under SR-134 (only providing supplemental aesthetic features to enhance wildlife access). Local drainage will be routed to the river channel during storm events through existing or modified connections.
- All Funding Sources and Amounts: Design and construction will be funded by the U.S. Army Corps of Engineers; the City will be providing an ecosystem restoration easement on the land for the project.
- Community Outreach: The Corps is developing an outreach plan that incorporates public meetings and stakeholder outreach. The tentative first public virtual public meeting is scheduled for 09/29/22.
- Implementation of Shade: The project will include native plants and trees that can provide shade and habitat.
- Plant and Tree Specifications: The plant palette will be developed in the future stages and will include native plants and trees and those outlined in the feasibility report.



# REACH 1 PH A - POLLYWOG PARK AREA OF GRIFFITH PARK

A portion of Reach 1 will be contracted for design-build work by the end of FY23. USACE intends this contract to include a portion of Reach 1 overbank restoration on the North side of the Los Angeles River approximately between Buena Vista St (western boundary) and S Beachwood Dr (eastern boundary) as shown in attached exhibit.

Per the feasibility report, restoration activities will include:

- a) Habitat restoration through planting of riparian community
- b) Irrigation for establishment of new plantings and a drought management plan
- c) Fine-grading, swales, and other localized water harvesting/infiltrating features to support new riparian community
- d) Habitat and wildlife connectivity under SR-134 (assume will not need to modify existing underpass structure; only provide supplemental aesthetic features to enhance wildlife access)

Note that these features will not increase existing flood risk management level of the channel. There will be no in-channel or bank modifications within this Reach. Some modifications to local drainage may be required to divert and capture flows for the plant community. Modifications may include minor riffles, swales, shallow areas to direct drainage. Local drainage will be routed to the river channel during storm events through existing or modified connections.



Existing Conditions



Graphic Depiction of the Restoration in Pollywog Park

## Proposed Schedule:

July - September 2022: *Corps Right of Entry (ROE) from RAP*

September 2022 - March 2023: *Public Outreach*

October 2022 - January 2023: *Corps Start Geotech and other Tech Reports*

January - March 2023: *Corps Preliminary Design and Outreach to 30% Design*

April to September 2023: *Corps Bid and Award*

September 2023: *Corps Award Design Build Contract*

18-24 months: *Anticipated project duration for Design/Construction completion*



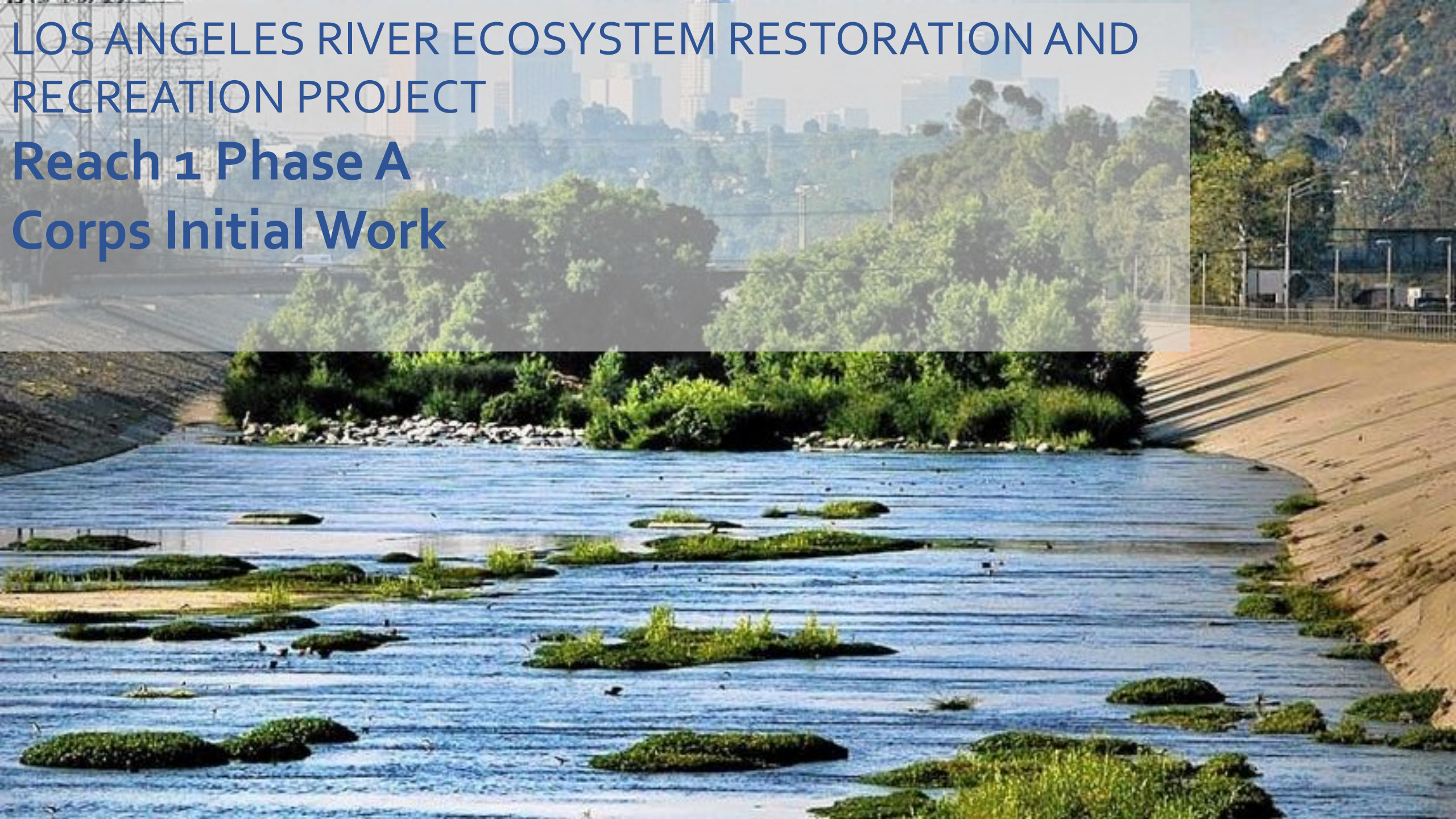
US Army Corps  
of Engineers





# LOS ANGELES RIVER ECOSYSTEM RESTORATION AND RECREATION PROJECT

## Reach 1 Phase A Corps Initial Work







— LOS ANGELES RIVER  
— LOS ANGELES RIVER WATERSHED

0 3 6 MILES

# LOS ANGELES RIVER ECOSYSTEM RESTORATION AND RECREATION LARERR Alternative Delivery



# The LA River is Important Ecologically

## Mediterranean Climates



### HABITAT SCARCITY

The Project area is within a globally scarce Mediterranean ecosystem, which **covers only 2% of the Earth's land surface but accounts for 20% of all known plant species.**

## Biodiversity Hotspots



### BIODIVERSITY

The California Floristic Province is one of the top 25 global hotspots of rapid biodiversity loss.



California Least Tern

### STATUS & TRENDS

Over 90% of Southern California's riparian habitat has been lost along with 95% of California's wetlands and 40% of its reptiles and amphibians.



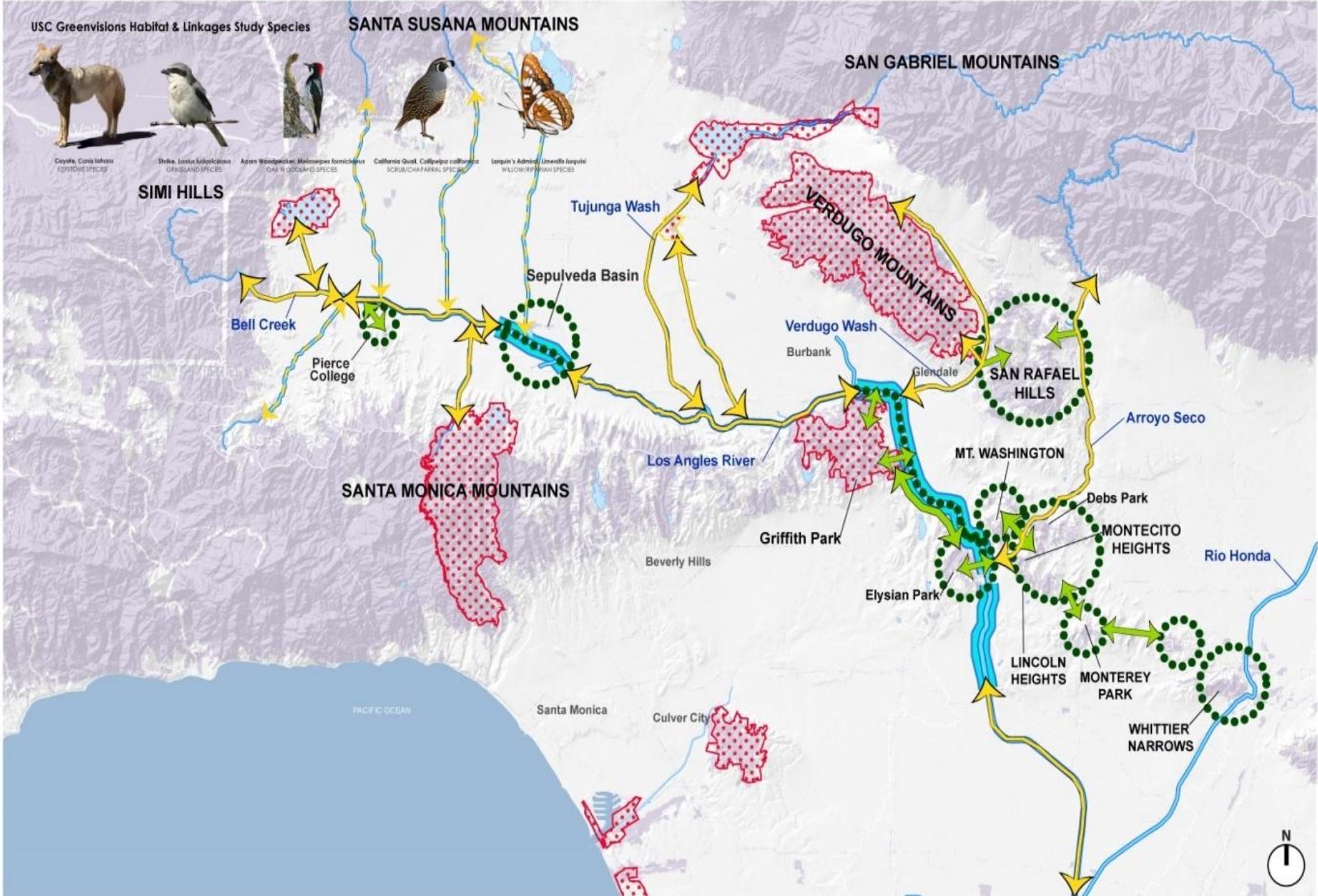
California Red-Legged Frog

### SPECIAL STATUS SPECIES

Approximately **140** federally protected bird species are supported by the LA River.



# LA River Ecosystem Restoration Project Supports Habitat Connectivity



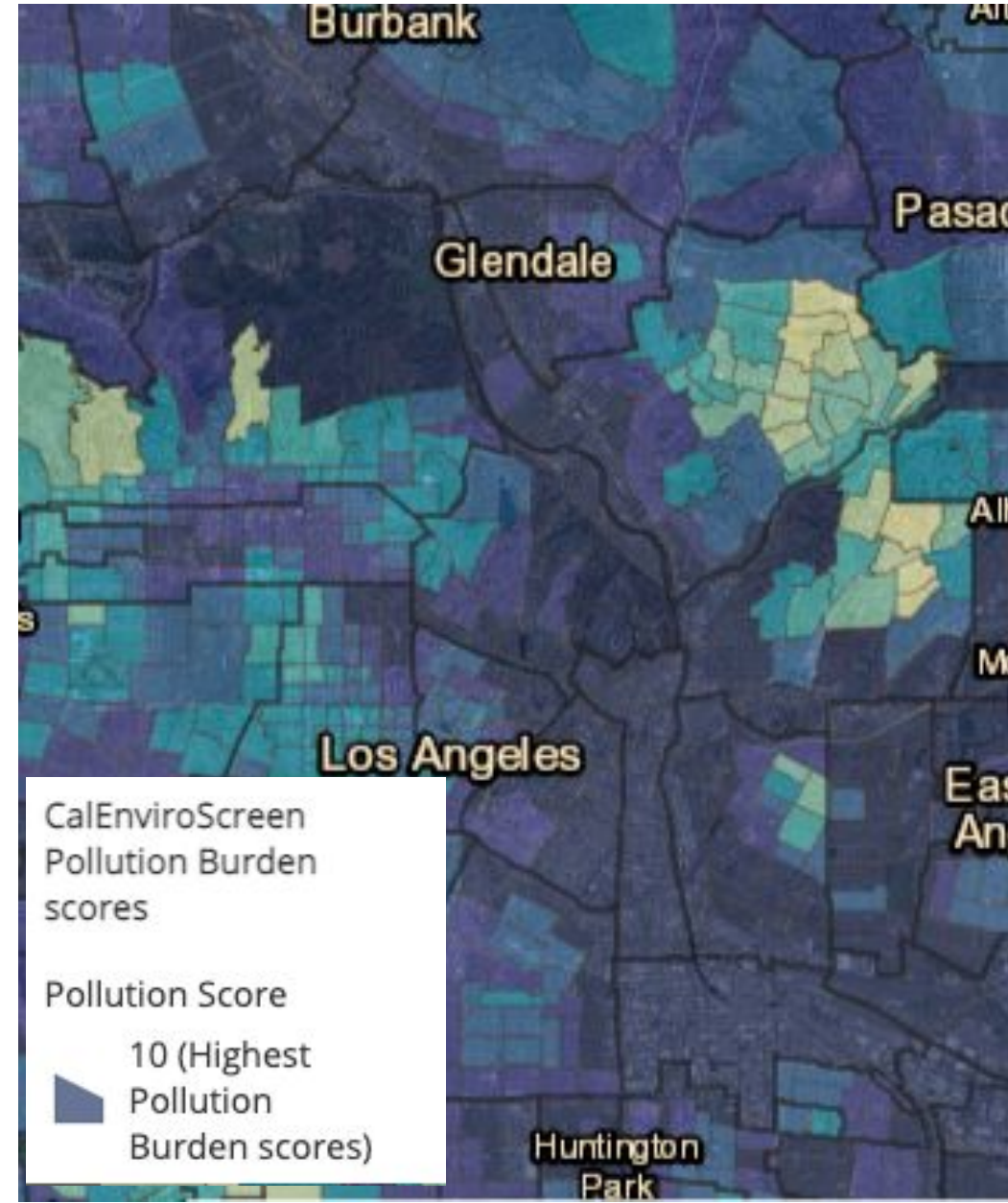
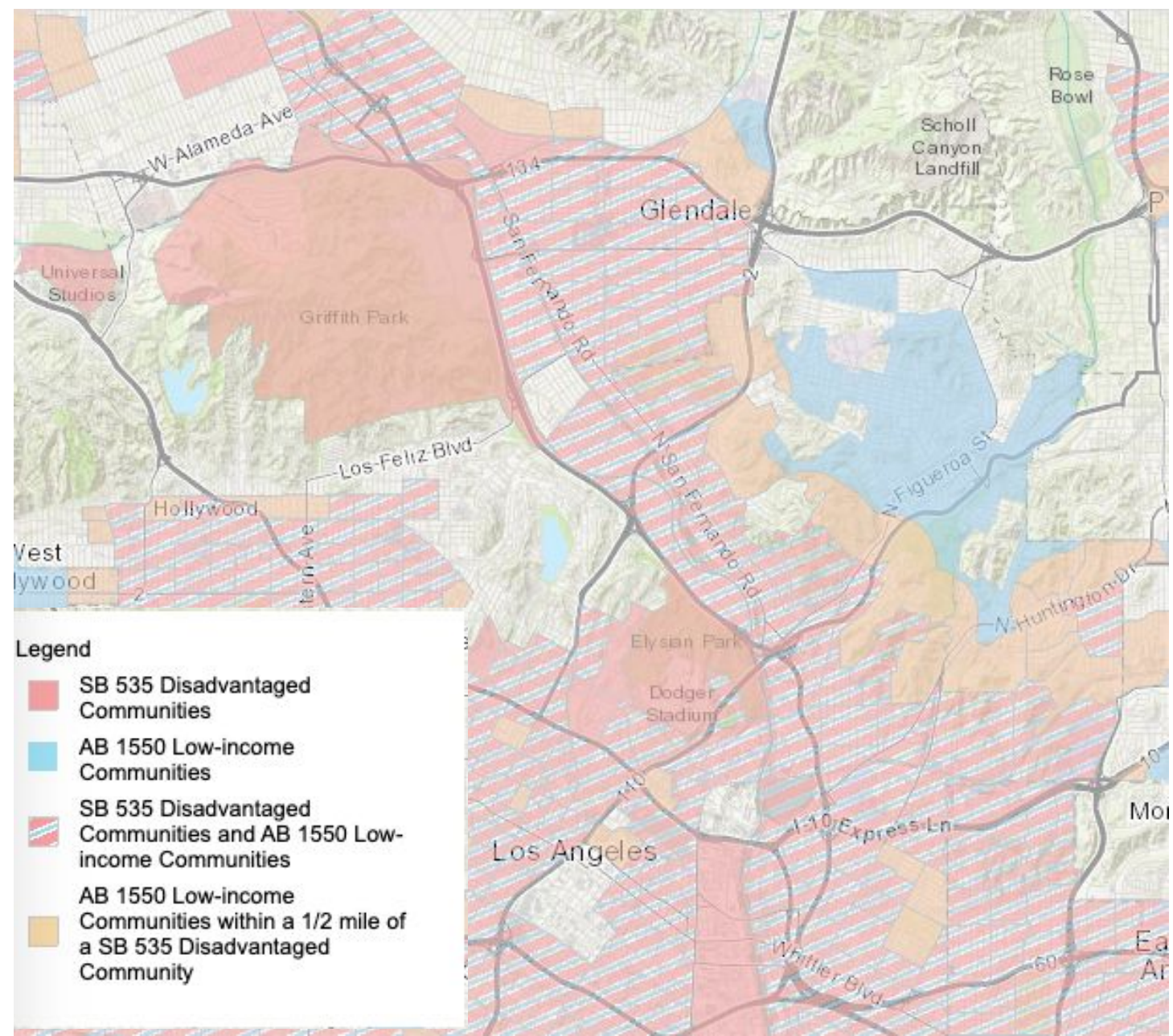


# LA River Ecosystem Restoration Project Includes Recreation Connectivity





# LA River Ecosystem Restoration and Recreation Project Supports Equity





# LARERR Project Planning Process

2006 -- Start of LA River Ecosystem Restoration (LARER) Feasibility Study

2007 -- Los Angeles River Revitalization Master Plan Adopted

2015 -- LARER Project USACE Final Chief's Report

2016 -- LARER Authorized by City Council 06/2016 and Congress

2022 -- LARERR Appropriated New Start Construction



# LARERR Public Involvement

A public review of the Draft IFR ran from September to November 2013

**nearly 500** comments were submitted from agencies, organizations, and individuals- including 6 state agencies, 13 local agencies, 17 key stakeholder organizations, and 8 neighborhood councils

**7** public workshops (River Update Meetings) were held

Draft IFR public meeting was held with **over 300** attendees who expressed close to unanimous support for Alternative 20

the USACE received petitions with **over 8,000** signatures in support of the Alternative

**84%** of the public comments received supported a large-scale restoration project



# LARERR Project Goals

Restore Lost Ecosystems containing  
Riparian and Freshwater Marsh Habitat

Increase Habitat Connectivity

Increase Recreation

Increase Access to Open Space and  
Nature in Underserved Communities

Volume 1 of 4: Integrated Feasibility Report



## Los Angeles River Ecosystem Restoration Integrated Feasibility Report

FINAL Feasibility Report and Environmental Impact Statement/Environmental Impact  
Report

VOLUME 1: INTEGRATED FEASIBILITY REPORT

Los Angeles County, California

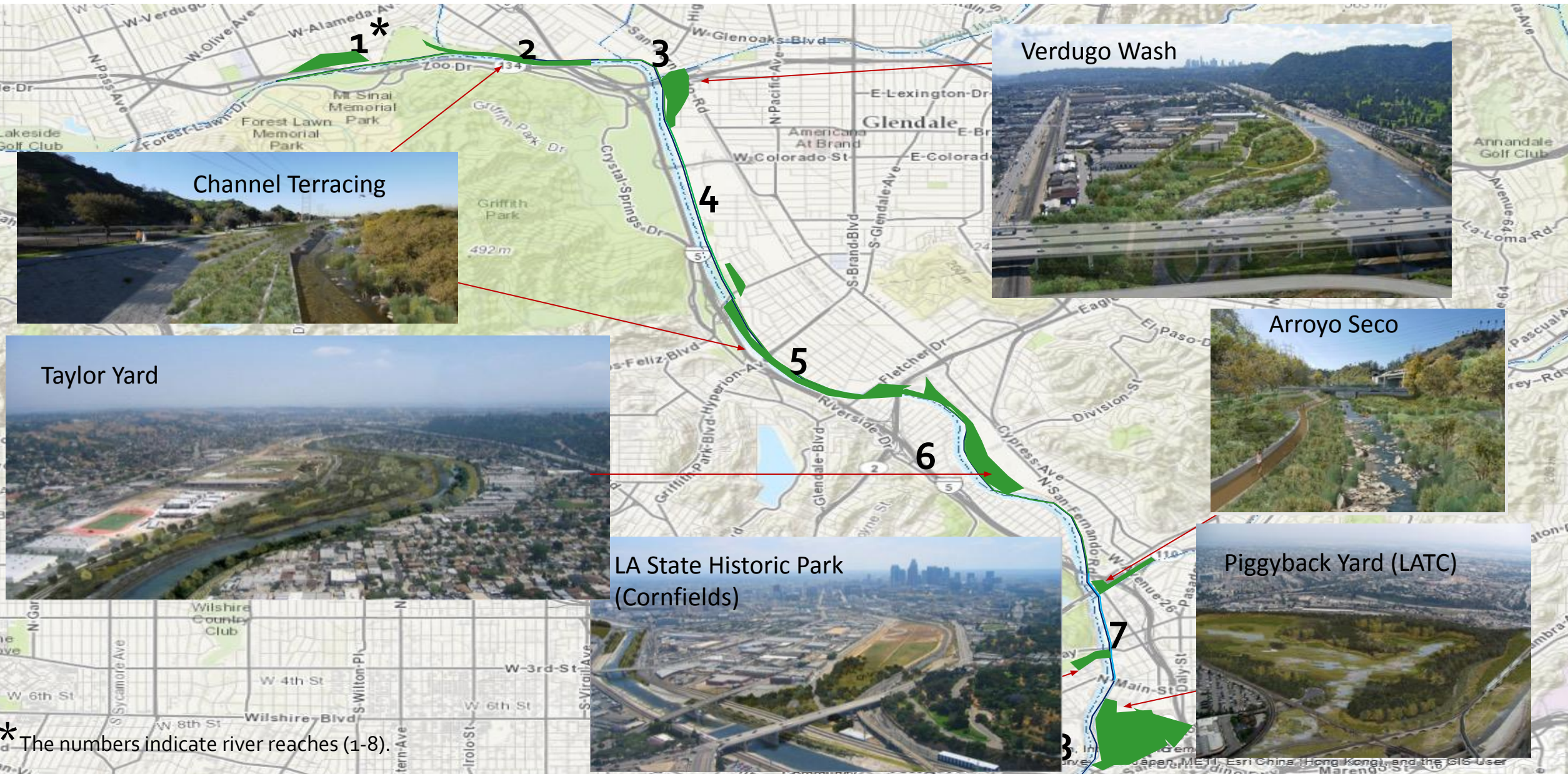
September 2015



US Army Corps  
of Engineers®  
Los Angeles District



# LARERR Project Elements



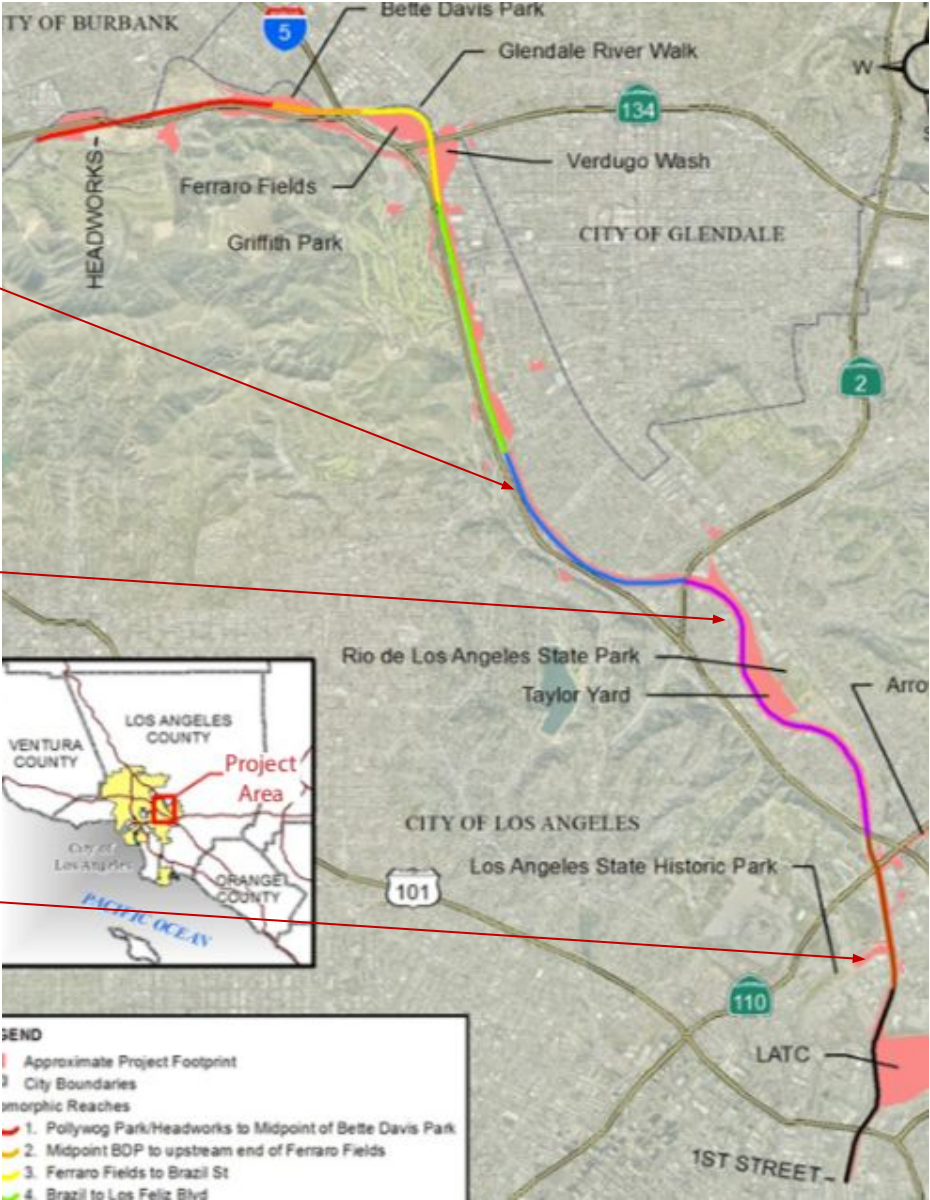
\* The numbers indicate river reaches (1-8).



# LARERR Project Alternative Delivery City Design and Construction

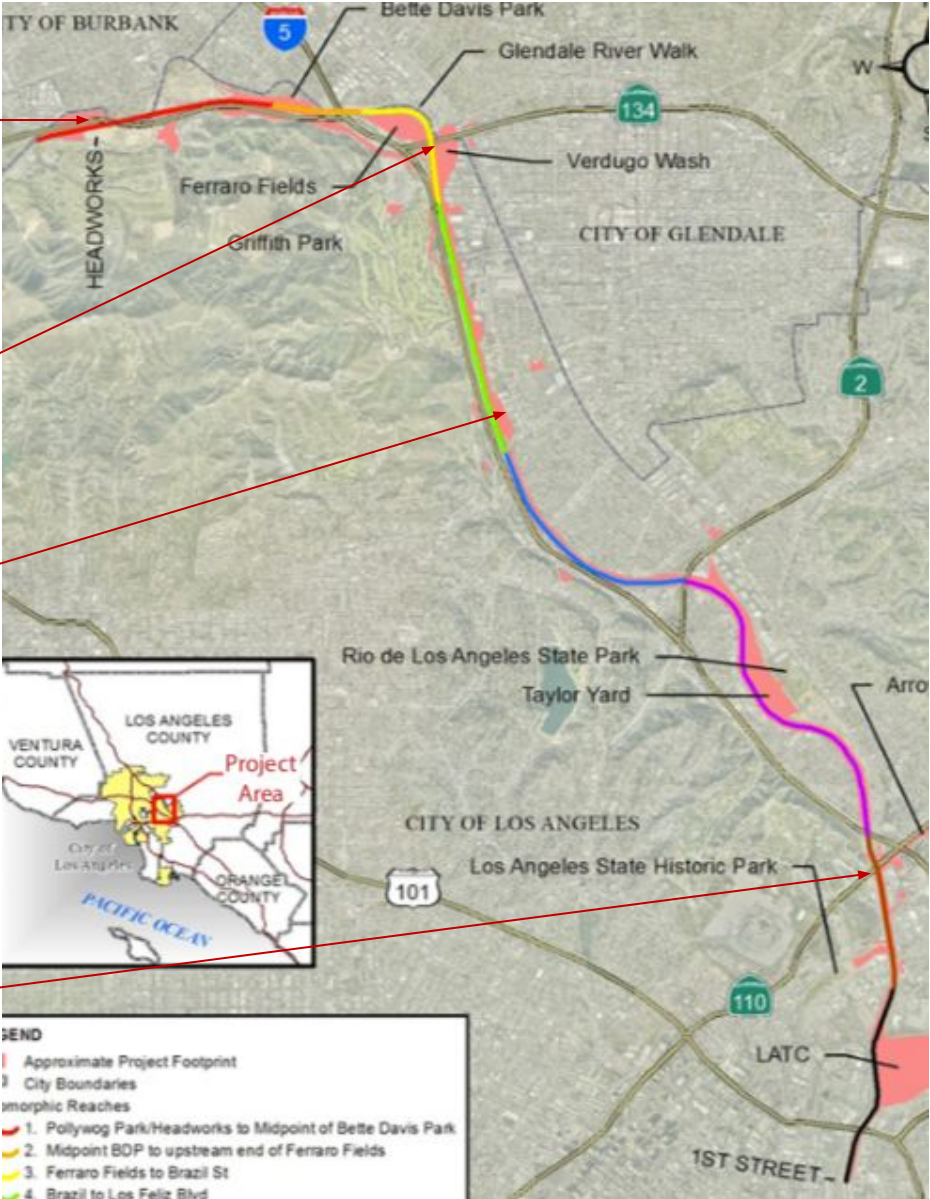


Reach 8A In-Stream Reaches



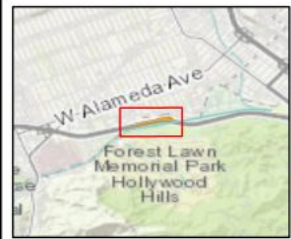
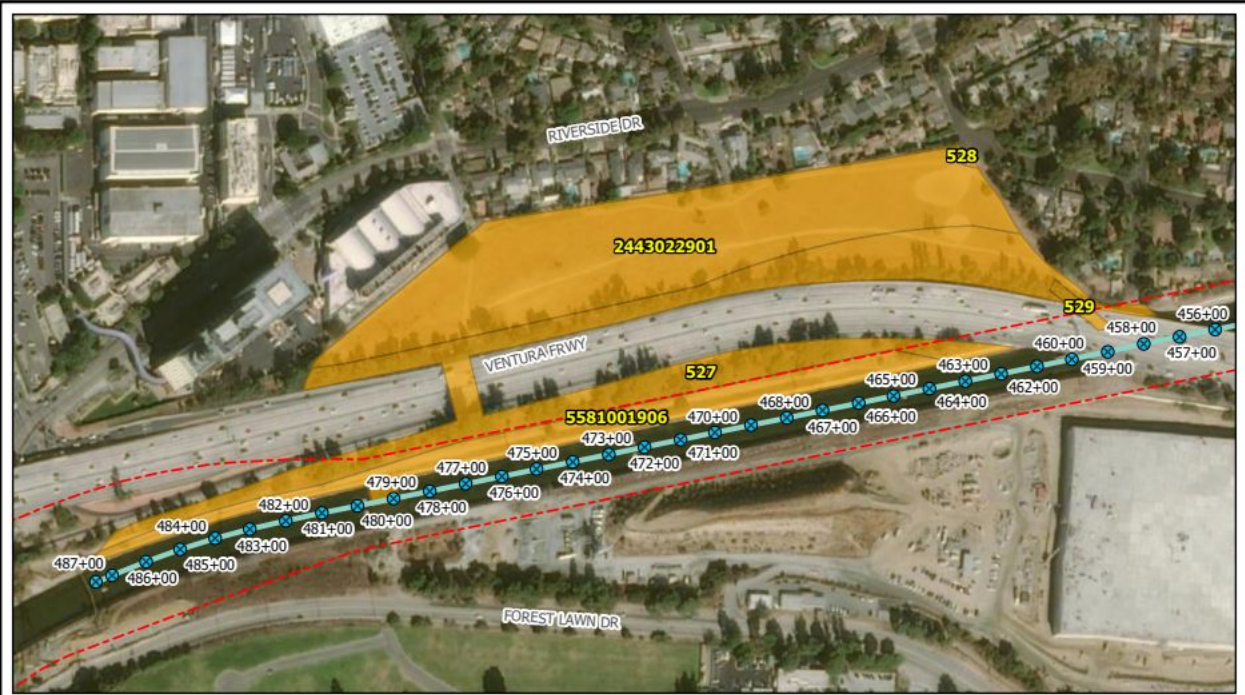


# LARERR Project Alternative Delivery USACE Design and Construction





# LARERR Reach 1 Phase A Element for Corps Initial Work



## Legend

- Stationing
- LARER Reaches
  - Reach 1
  - - - Right-of-way
  - Sub-Reach One Properties

## Sources:

Imagery Background:  
Maxar, Microsoft, County of Los Angeles, Bureau of Land Management, Esri, HERE, Garmin, USGS, NGA, EPA, USDA, NPS  
Coordinate System:  
NAD 1983 2011 StatePlane California V FIPS 0405 F1 US

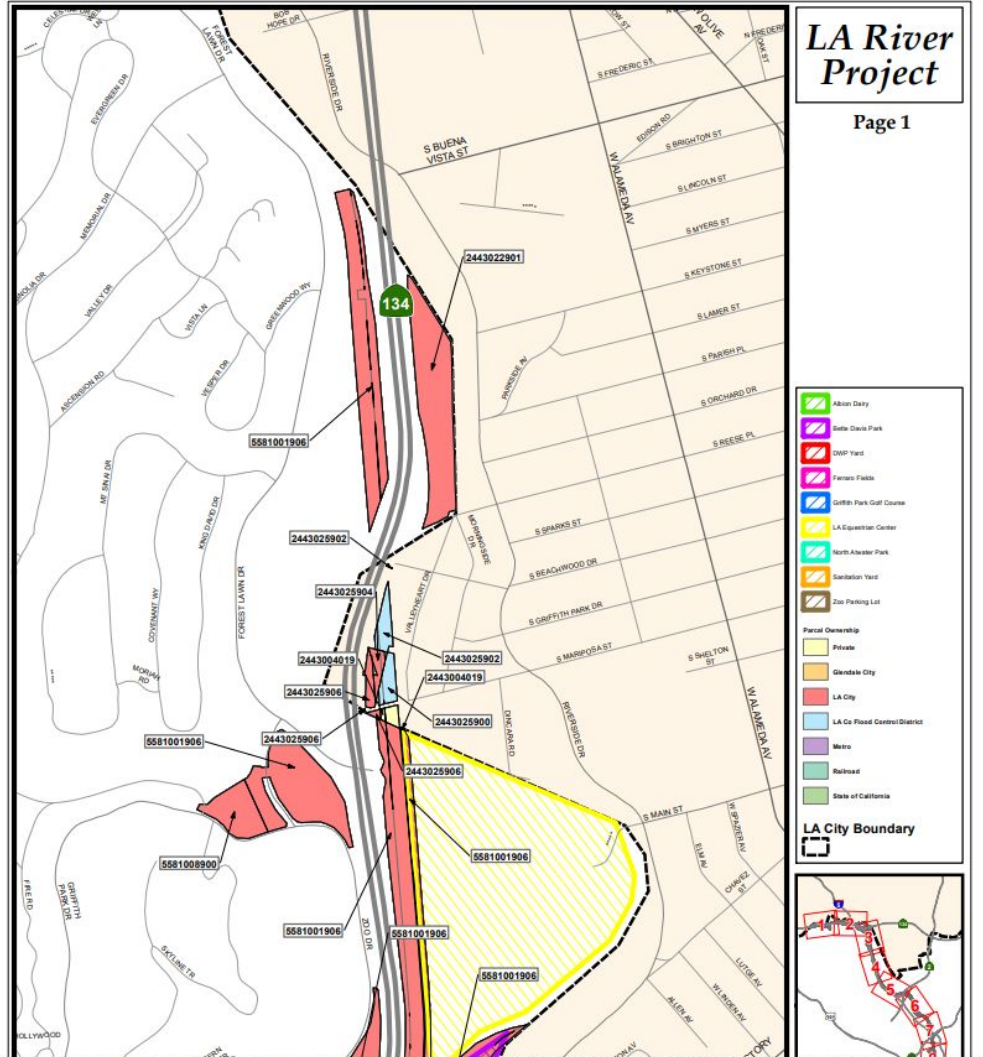
0 125 250 375 500 Feet  
1 in. = 350 feet

## Los Angeles River Ecosystem Restoration

### Reach 1 Phase A



U.S. ARMY CORPS OF ENGINEERS  
LOS ANGELES DISTRICT



## LA River Project

Page 1

## LA City Boundary





# LARERR Reach 1 Phase A Current Site Condition





# Reach 1 Phase A Concept from the LARERR Feasibility Report

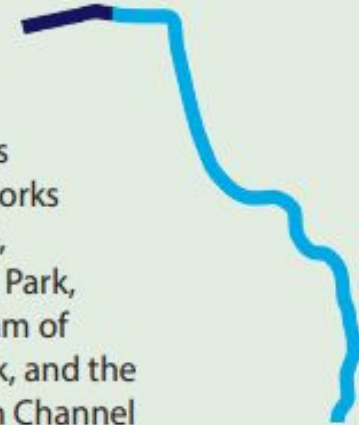
REACH

1

## Riparian Corridor



Areas of restoration in this reach include the overbanks of both sides of the River. This includes the east overbank across the River from the USACE Headworks Ecosystem Restoration Study site, the Pollywog Park area of Griffith Park, the open area directly downstream of Headworks on the right overbank, and the left overbank of Burbank Western Channel (a tributary from the north/west). It includes irrigation and water harvesting features to sustain plants, including micro-grading and/or swales to create depressions in the land to capture and infiltrate water. Where stormwater or street runoff is excessive during storm events, a connection to the River allows overflow into the channel. There would be no substantial channel modifications within this reach. Planting in this area would comply with all levee regulations.





# LARERR Reach 1 Phase A Draft Schedule from the Corps

Corps Right of Entry (ROE) from RAP -- July - September 2022

Public Outreach – September 2022- March 2023

Corps Start Geotech and other Tech Reports – October 2022 - January 2023

Corps Preliminary Design to 30% Design – January - March 2023

Corps Bid and Award – April to September 2023

Corps Award Design Build Contract — September 2023

Final Design and Construction ~ 18-24 months after Award